

Proteus Laboratories

# MONTHLY HAEMATOLOGY

CYCLE 13 SAMPLE 11

## Explanation of codes used in this report

- R - Results removed due to reconstitution error
- N - No result returned
- C - Result corrected

*acceptable*

Authorised by: Stephen Doherty, RIQAS Manager

Issue No: 1

Issue Date: 11/11/2020

Randox Laboratories Limited  
55 Diamond Road  
CRUMLIN BT29 4QY  
Tel: +44 (0)28 9445 4399  
Fax: +44 (0)28 9445 4398  
Email: mail@riqas.com

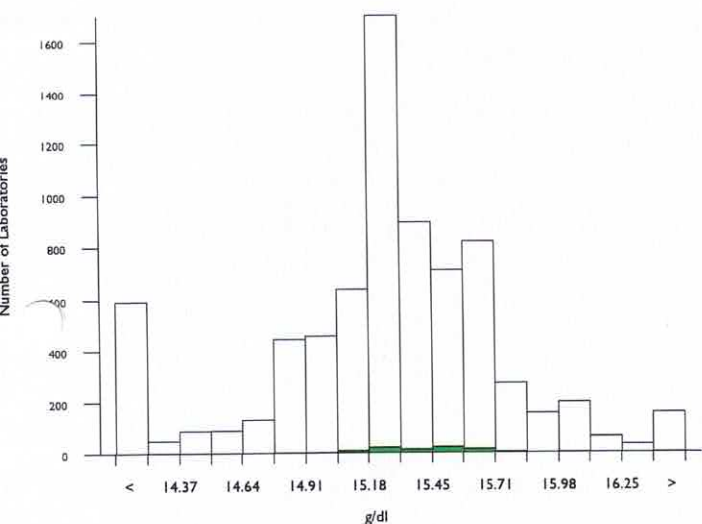
# Haemoglobin, g/dl

	N	Mean	CV%	U <sub>m</sub>	SDPA	Exc.
All Methods	6776	15.316	2.3	0.01	0.37	692
Beckman Coulter Ac. T 5 series	89	15.419	1.5	0.03	0.37	4

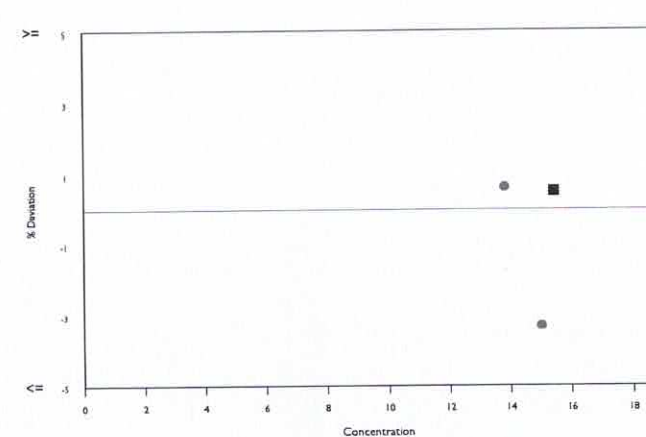
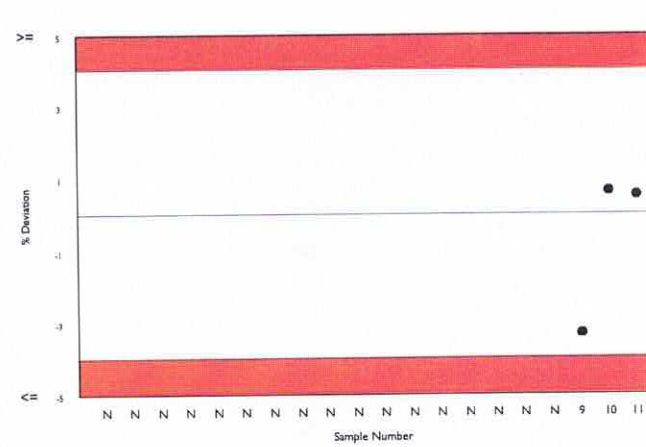
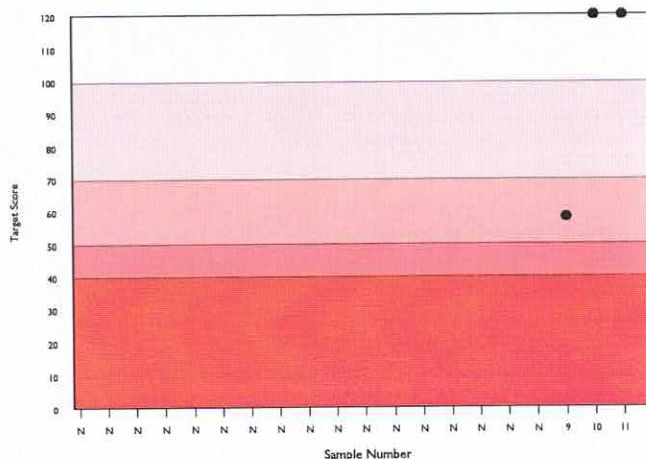
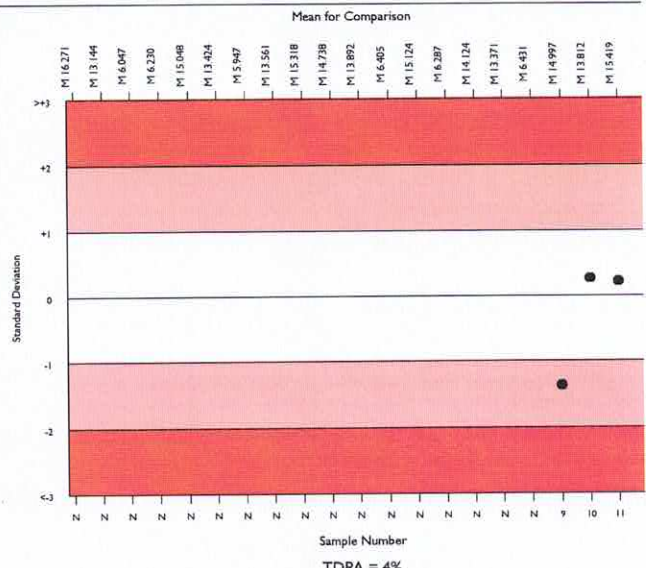
▲ Your Result	15.500	SDI	0.22
		RMSDI	Too Few
■ Mean for Comparison	15.419	TS	120
		RMST	Too Few
		%DEV	0.5
		RM%DEV	Too Few

Acceptable limits derived from Biological Variation N/A

Acceptable limits of performance for RIQAS 4.00%



Method	N	Mean	CV%	U <sub>m</sub>
Sysmex XN Series	1303	15.374	1.2	0.01
Abbott Cell-Dyn Ruby	410	15.611	1.7	0.02
Sysmex XN-L Series (330/350/450/550)	346	15.264	1.1	0.01
Sysmex XS series	326	15.337	1.3	0.01
Mindray BC 1000/2000/3000 series	294	15.389	2.6	0.03
Beckman Coulter DxH 600/800/900 Series	303	14.974	1.1	0.01
Siemens/Bayer Advia 120/2120	292	15.409	1.5	0.02
Nihon Kohden Celltac Alpha	270	15.590	1.9	0.02
Sysmex XP Series	262	15.040	1.8	0.02
Sysmex XT series	271	15.176	1.3	0.02
Manual Methods	202	14.078	4.3	0.05
Mindray BC-6000/6200/6600/6800/6800Plus	183	15.366	1.0	0.01
ABX Micros/Minos/ABC VET	168	15.203	2.7	0.04
Sysmex KX 21	153	15.053	1.8	0.03
Horiba ABX Pentra 60/80/XLR	150	15.437	1.3	0.02
Calculated from HCT	145	13.786	3.5	0.05
Mindray BC 5100/5180/5300/5380/5390	136	15.395	2.3	0.04
Nihon Kohden Celltac E/Es	87	15.444	1.5	0.03
Beckman Coulter Ac. T 5 series	89	15.419	1.5	0.03
Medonic M series/Swelab	80	15.678	2.4	0.05
Beckman Coulter LH700 Series	75	15.240	1.0	0.02

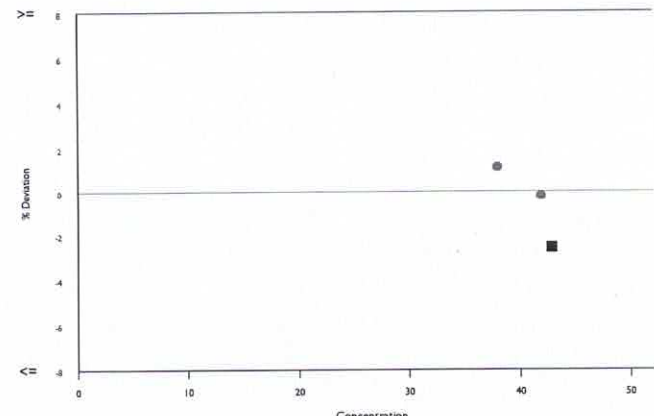
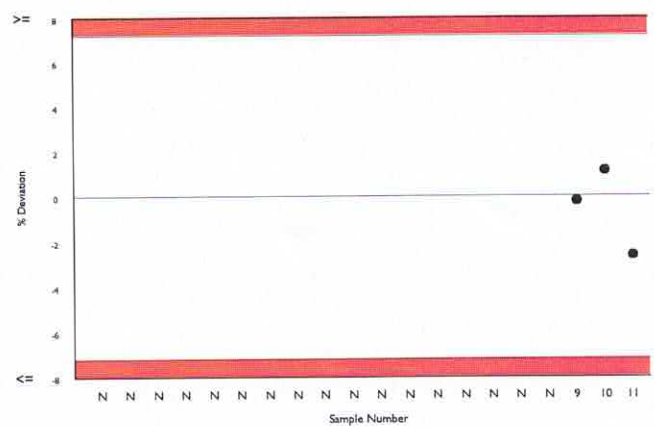
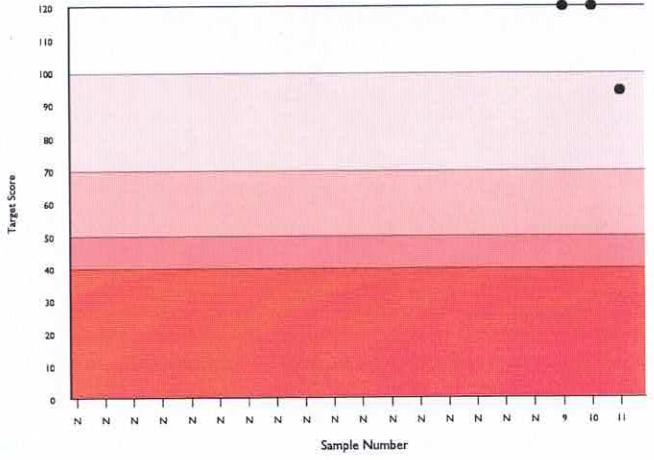
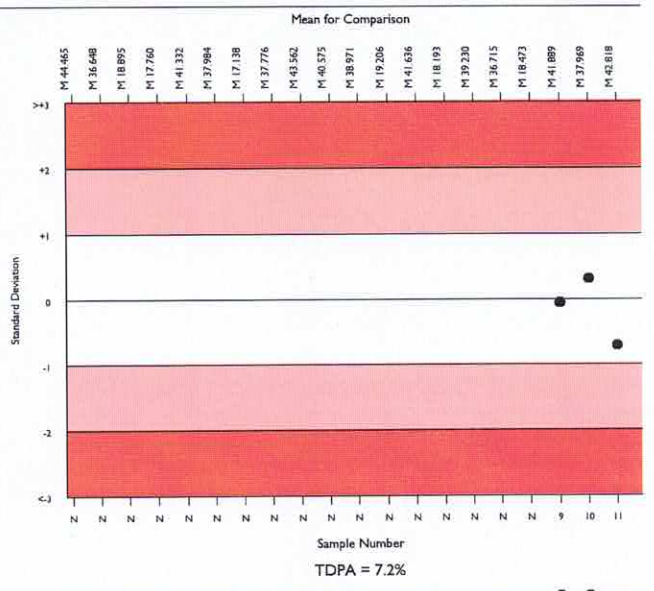
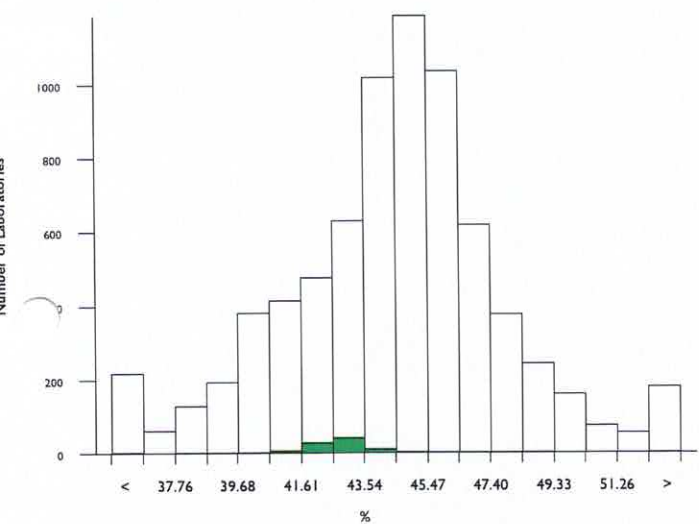


# Haematocrit (HCT), %

	N	Mean	CV%	U <sub>m</sub>	SDPA	Exc.
All Methods	6843	44.510	5.8	0.04	1.64	595
Beckman Coulter Ac. T 5 series	82	42.818	1.9	0.11	1.57	11

<span style="color: green;">▲</span> Your Result	41.700	SDI	-0.71
		RMSDI	Too Few
<span style="color: green;">■</span> Mean for Comparison	42.818	TS	94
		RMTS	Too Few
		%DEV	-2.6
		RM%DEV	Too Few

Acceptable limits derived from Biological Variation: N/A  
 Acceptable limits of performance for RIQAS: 7.20%



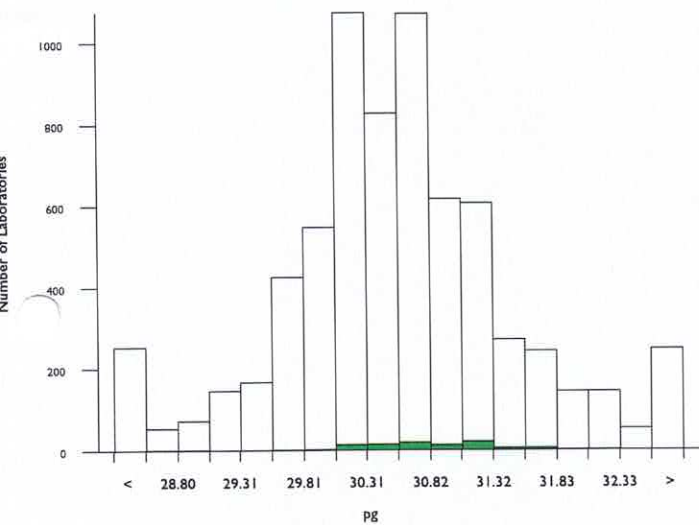
Method	N	Mean	CV%	U <sub>m</sub>
Sysmex XN Series	1246	45.114	2.4	0.04
Abbott Cell-Dyn Ruby	404	39.613	2.8	0.07
Sysmex XN-L Series (330/350/450/550)	340	45.027	2.8	0.09
Sysmex XS series	316	45.009	2.8	0.09
Mindray BC 1000/2000/3000 series	293	46.263	3.6	0.12
Beckman Coulter DxH 600/800/900 Series	296	45.545	1.8	0.06
Siemens/Bayer Advia 120/2120	289	40.622	2.7	0.08
Nihon Kohden Celltac Alpha	265	46.172	2.9	0.10
Sysmex XP Series	257	41.879	3.6	0.12
Sysmex XT series	257	44.785	2.7	0.10
Manual Methods	204	42.234	3.2	0.12
Mindray BC-6000/6200/6600/6800/6800Plus	179	49.647	2.6	0.12
ABX Micros/Minos/ABC VET	165	44.476	3.7	0.16
Microhematocrit: Centrifugation	164	41.862	3.6	0.15
Sysmex KX 21	153	42.136	3.0	0.13
Horiba ABX Pentra 60/80/XLR	146	42.928	2.5	0.11
Mindray BC 5100/5180/5300/5380/5390	134	48.311	4.5	0.23
Nihon Kohden Celltac E/Es	91	46.796	3.1	0.19
Beckman Coulter Ac. T 5 series	82	42.818	1.9	0.11
Medonic M series/Swelab	78	44.600	3.4	0.21
Beckman Coulter LH700 Series	74	45.773	2.0	0.13

# MCH, pg

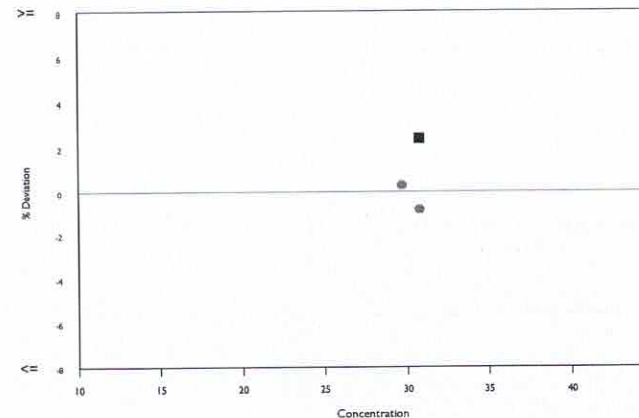
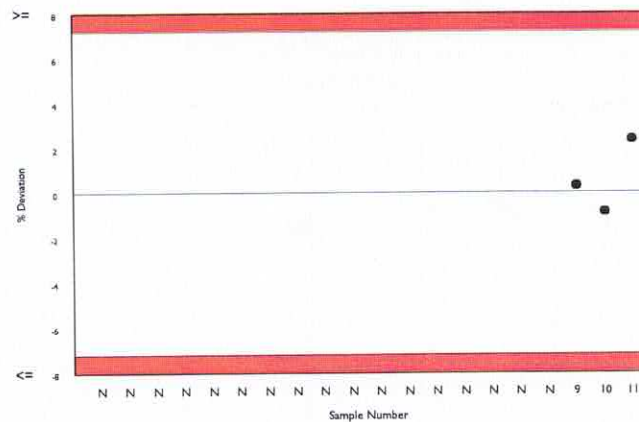
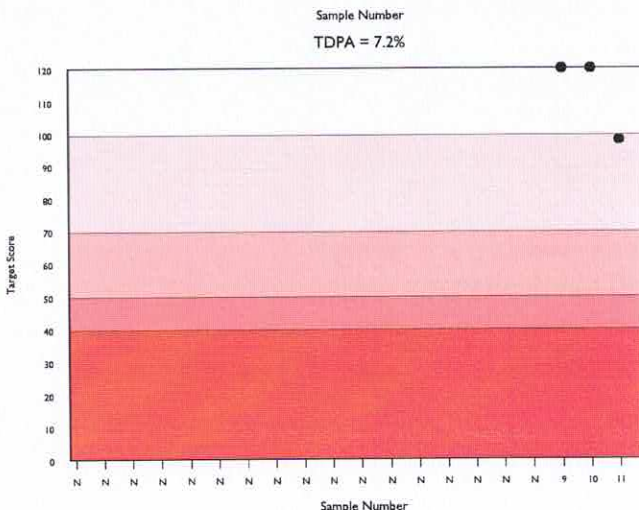
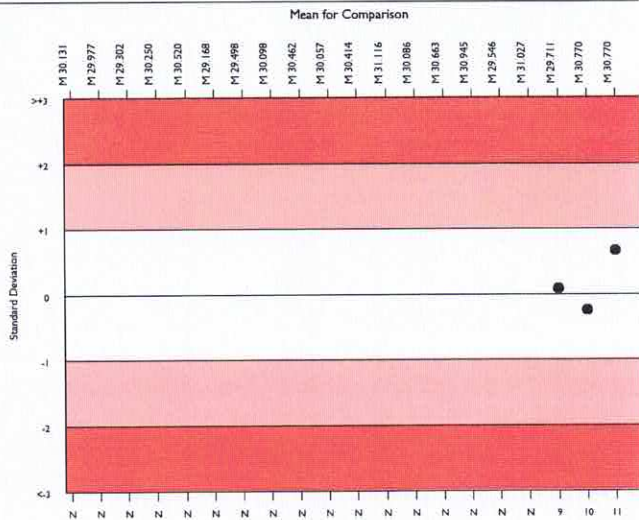
	N	Mean	CV%	U <sub>m</sub>	SDPA	Exc.
All Methods	6337	30.571	2.2	0.01	1.10	604
Beckman Coulter Ac. T 5 series	86	30.770	1.4	0.06	1.11	7

<span style="color: green;">▲</span> Your Result	31.500	SDI	0.66
		RMSDI	Too Few
<span style="color: green;">■</span> Mean for Comparison	30.770	TS	98
		RMTS	Too Few
		%DEV	2.4
		RM%DEV	Too Few

Acceptable limits derived from Biological Variation: N/A  
 Acceptable limits of performance for RIQAS: 7.20%



Method	N	Mean	CV%	U <sub>m</sub>
Sysmex XN Series	1263	30.455	1.4	0.01
Abbott Cell-Dyn Ruby	414	30.911	2.9	0.05
Sysmex XN-L Series (330/350/450/550)	345	30.417	1.3	0.03
Sysmex XS series	322	30.521	1.4	0.03
Beckman Coulter DxH 600/800/900 Series	301	30.336	1.4	0.03
Mindray BC 1000/2000/3000 series	288	30.342	3.0	0.07
Siemens/Bayer Advia 120/2120	297	31.121	2.3	0.05
Nihon Kohden Celltac Alpha	260	30.971	2.1	0.05
Sysmex XP Series	263	30.539	2.4	0.06
Sysmex XT series	262	30.188	1.4	0.03
Mindray BC-6000/6200/6600/6800/6800Plus	183	30.621	1.4	0.04
ABX Micros/Minos/ABC VET	160	30.419	3.0	0.09
Sysmex KX 21	158	30.486	2.6	0.08
Horiba ABX Pentra 60/80/XLR	152	30.746	1.9	0.06
Mindray BC 5100/5180/5300/5380/5390	131	30.948	1.8	0.06
Nihon Kohden Celltac E/Es	85	30.790	2.2	0.09
Beckman Coulter Ac. T 5 series	86	30.770	1.4	0.06
Medonic M series/Swelab	80	31.293	2.3	0.10
Beckman Coulter LH700 Series	72	30.300	1.2	0.05
Mindray BC 5000/5150/5140/5130/5120	72	30.945	2.3	0.10
ABX Pentra 120/Nexus Series	70	30.099	2.1	0.09

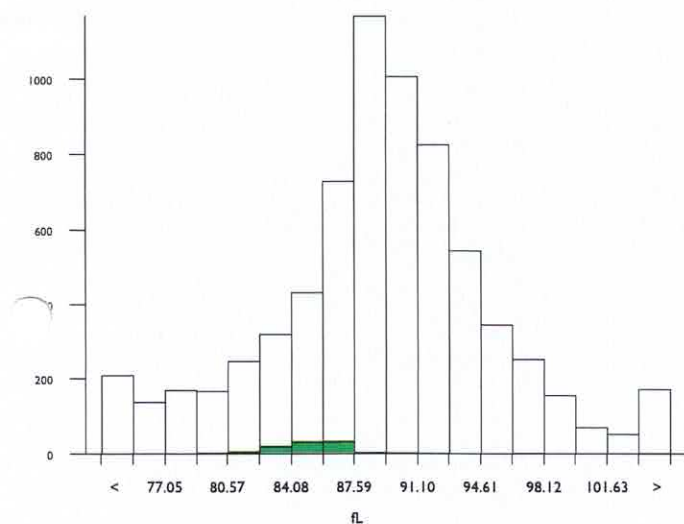


# MCV, fL

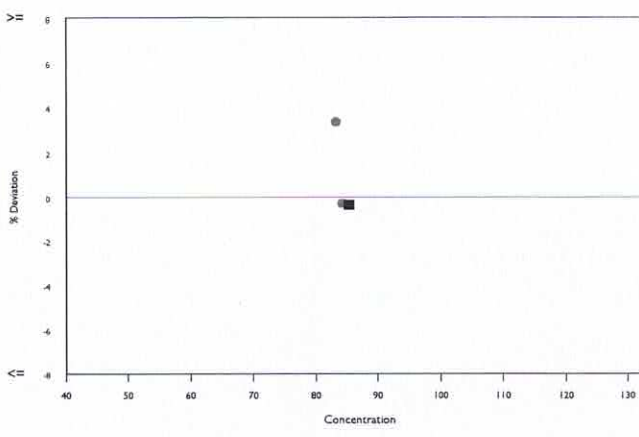
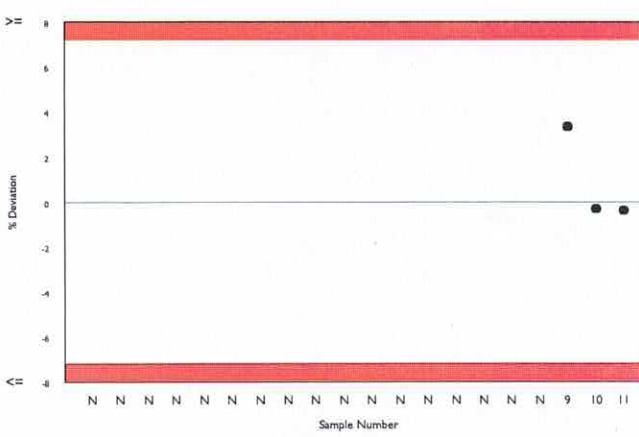
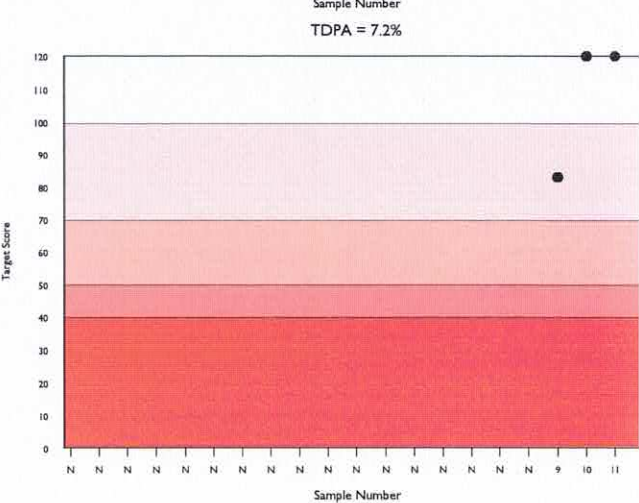
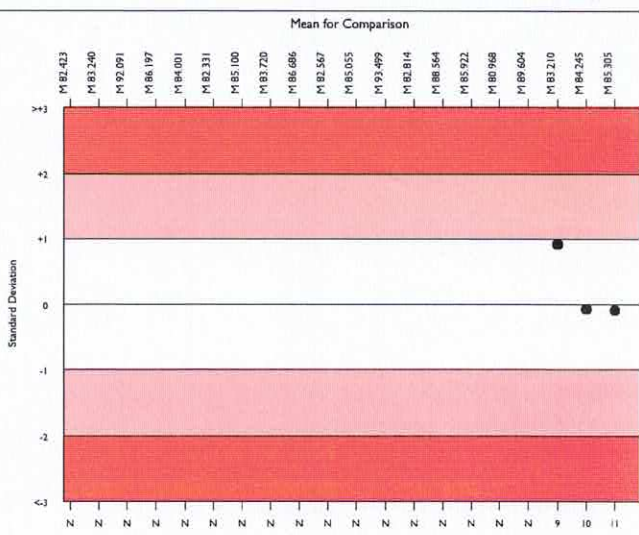
	N	Mean	CV%	U <sub>m</sub>	SDPA	Exc.
All Methods	6362	89.348	5.2	0.07	3.28	621
Beckman Coulter Ac. T 5 series	80	85.305	1.3	0.16	3.13	13

<span style="color: green;">▲</span> Your Result	85.000	SDI	-0.10
		RMSDI	Too Few
<span style="color: green;">■</span> Mean for Comparison	85.305	TS	120
		RMTS	Too Few
		%DEV	-0.4
		RM%DEV	Too Few

Acceptable limits derived from Biological Variation: N/A  
 Acceptable limits of performance for RIQAS: 7.20%



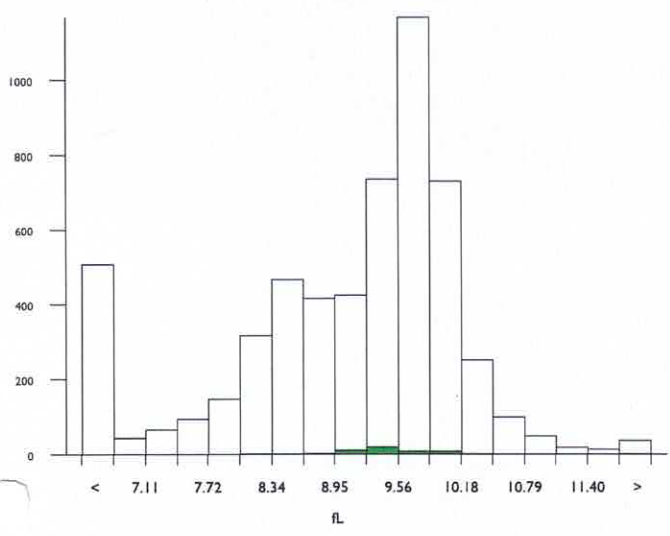
Method	N	Mean	CV%	U <sub>m</sub>
Sysmex XN Series	1250	89.333	2.3	0.07
Abbott Cell-Dyn Ruby	403	78.349	3.0	0.15
Sysmex XN-L Series (330/350/450/550)	344	89.545	3.0	0.18
Sysmex XS series	313	89.407	2.6	0.16
Beckman Coulter DxH 600/800/900 Series	294	92.202	1.3	0.09
Mindray BC 1000/2000/3000 series	287	91.250	2.8	0.19
Siemens/Bayer Advia 120/2120	294	81.859	3.3	0.20
Nihon Kohden Celltac Alpha	260	91.661	2.4	0.17
Sysmex XT series	259	89.224	2.7	0.19
Sysmex XP Series	258	84.683	3.0	0.20
Mindray BC-6000/6200/6600/6800/6800Plus	178	98.921	2.4	0.22
ABX Micros/Minos/ABC VET	158	89.074	2.8	0.25
Sysmex KX 21	147	85.229	3.1	0.27
Horiba ABX Pentra 60/80/XLR	145	85.662	2.7	0.24
Mindray BC 5100/5180/5300/5380/5390	128	97.198	3.2	0.35
Nihon Kohden Celltac E/Es	85	93.733	2.3	0.29
Beckman Coulter Ac. T 5 series	80	85.305	1.3	0.16
Medonic M series/Swelab	79	88.251	2.5	0.31
Beckman Coulter LH700 Series	77	91.003	1.8	0.23
Mindray BC 5000/5150/5140/5130/5120	67	95.545	1.5	0.22
ABX Pentra 120/Nexus Series	70	83.929	1.8	0.22



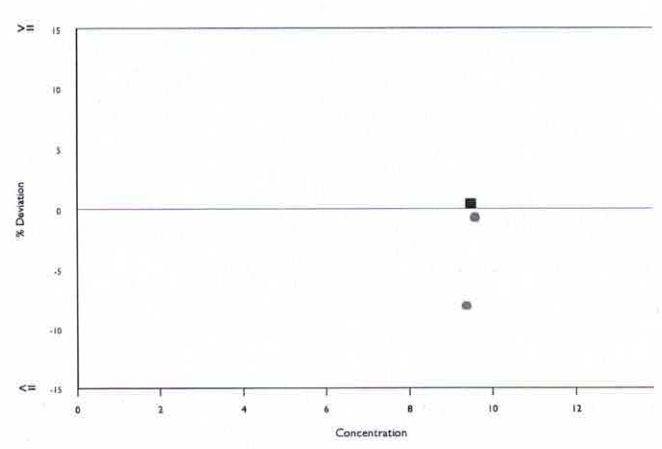
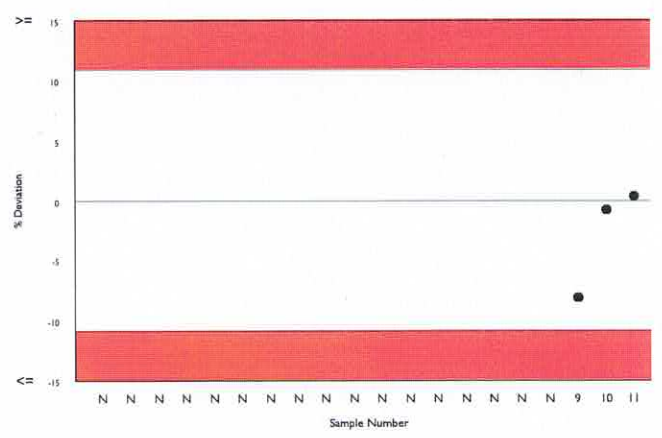
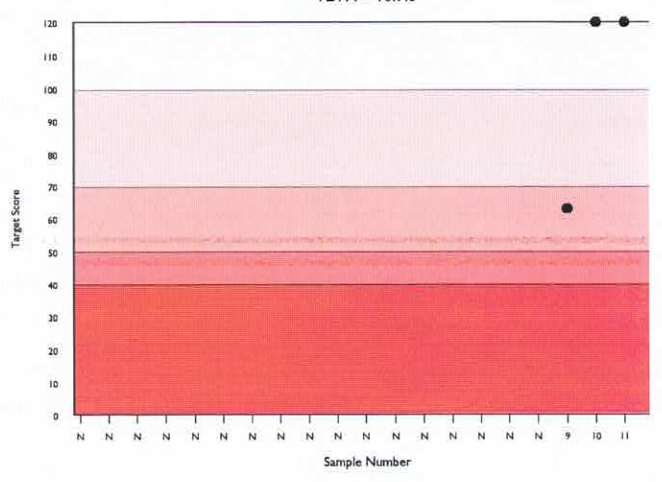
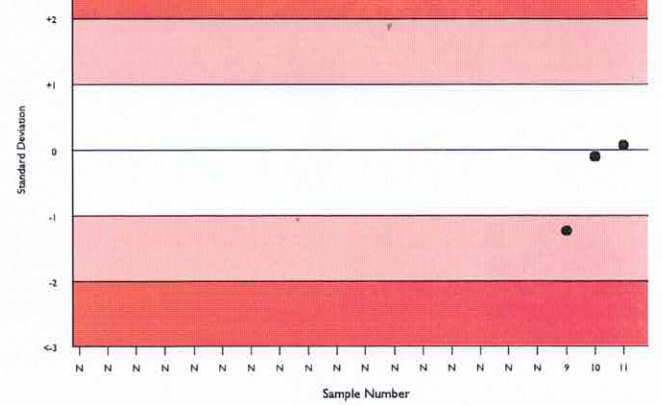
All Methods	5065	9.263	8.8	0.01	0.61	497
Beckman Coulter Ac. T 5 series	44	9.461	3.4	0.06	0.63	4

▲ Your Result	9.500	SDI	0.06
		RMSDI	Too Few
■ Mean for Comparison	9.461	TS	120
		RMTS	Too Few
		%DEV	0.4
		RM%DEV	Too Few

Acceptable limits derived from Biological Variation N/A  
 Acceptable limits of performance for RIQAS 10.90%



Method	N	Mean	CV%	U <sub>m</sub>
Sysmex XN Series	1028	9.730	1.9	0.01
Abbott Cell-Dyn Ruby	309	4.607	13.7	0.04
Sysmex XS series	257	9.918	2.9	0.02
Mindray BC 1000/2000/3000 series	269	8.873	6.3	0.04
Beckman Coulter DxH 600/800/900 Series	258	8.495	2.2	0.01
Sysmex XN-L Series (330/350/450/550)	248	9.716	2.1	0.02
Nihon Kohden Celltac Alpha	235	8.196	8.6	0.06
Sysmex XT series	219	9.519	2.7	0.02
Sysmex XP Series	207	9.395	2.6	0.02
Siemens/Bayer Advia 120/2120	212	10.186	5.5	0.05
Mindray BC-6000/6200/6600/6800/6800Plus	156	10.130	2.9	0.03
ABX Micros/Minos/ABC VET	118	8.271	4.6	0.04
Sysmex KX 21	115	9.308	2.6	0.03
Horiba ABX Pentra 60/80/XLR	111	9.298	4.0	0.04
Mindray BC 5100/5180/5300/5380/5390	105	8.833	3.1	0.03
Medonic M series/Swelab	74	8.520	3.3	0.04
Nihon Kohden Celltac E/E's	64	7.457	4.9	0.06
Mindray BC 5000/5150/5140/5130/5120	62	9.997	2.3	0.04
ABX Pentra 120/Nexus Series	63	9.263	3.0	0.04
Beckman Coulter LH700 Series	55	8.376	2.9	0.04
Horiba Yumizen H500/ 550	49	10.167	4.7	0.09



RIOAS





# Mean Platelet Volume, fL

Mean for Comparison

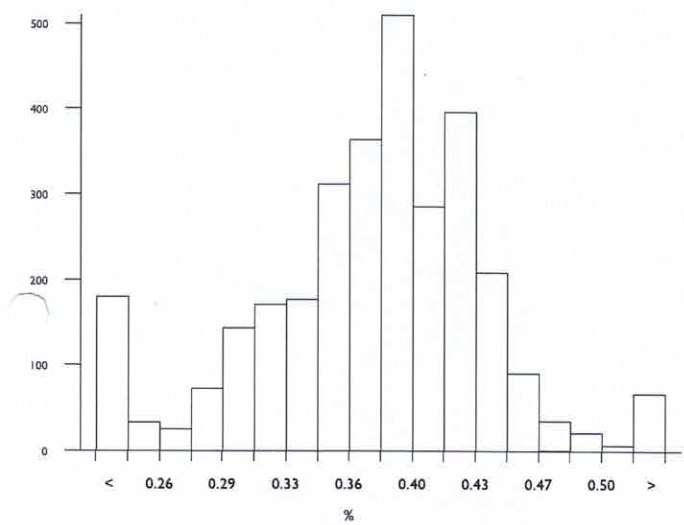
M18438	M18586	M18386	M19220	M19421	M19063	M18581	M18785	M19311	M19433	M18786	M19081	M19157	M18658	M19435	M19429	M19015	M19360	M19509	M19461
--------	--------	--------	--------	--------	--------	--------	--------	--------	--------	--------	--------	--------	--------	--------	--------	--------	--------	--------	--------

# Plateletcrit, %

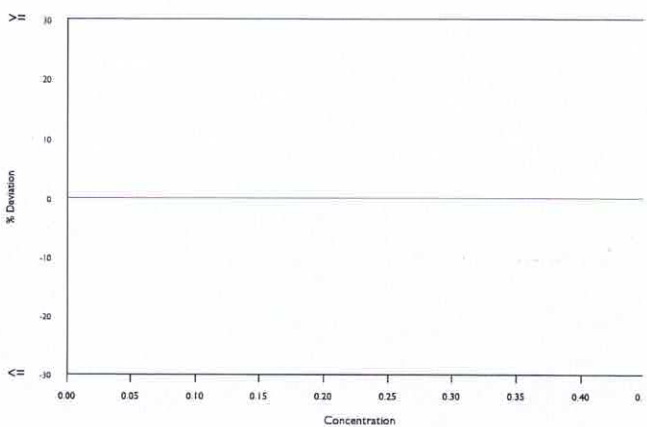
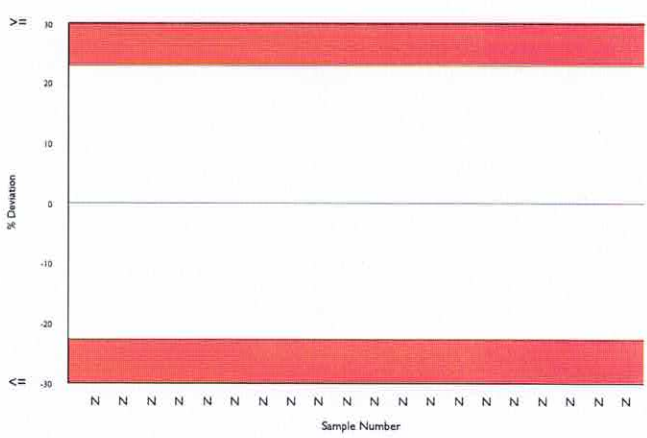
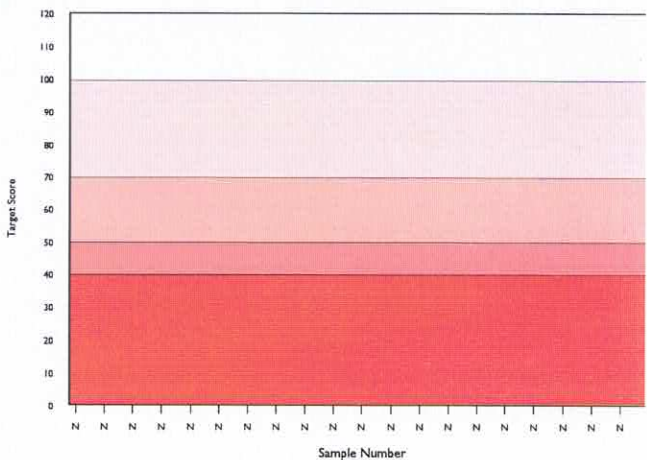
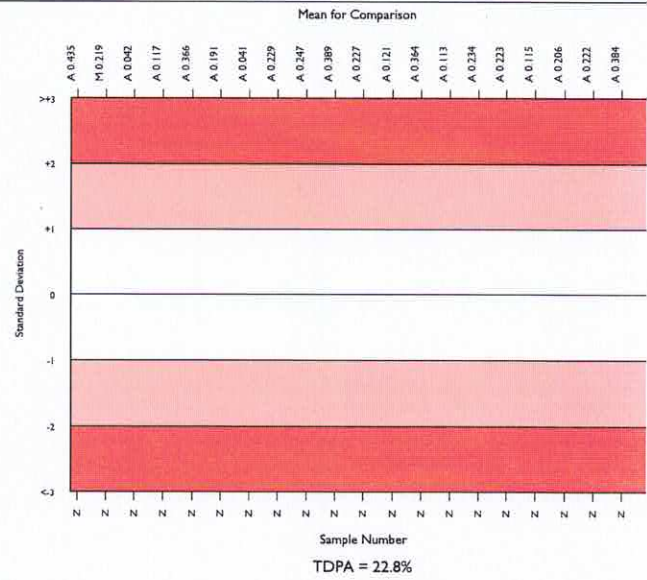
	N	Mean	CV%	U <sub>m</sub>	SDPA	Exc.
All Methods	2817	0.384	12.1	0.00	0.05	277
Beckman Coulter Ac. T 5 series	1	0.480	0.0	0.00	N/A	0

▲ Your Result	No Result	SDI	
		RMSDI	Too Few
□ Mean for Comparison	0.384	TS	
		RMTS	Too Few
		%DEV	
		RM%DEV	Too Few

Acceptable limits derived from Biological Variation	N/A
Acceptable limits of performance for RIQAS	22.80%



Method	N	Mean	CV%	U <sub>m</sub>
Sysmex XN Series	473	0.406	4.4	0.00
Mindray BC 1000/2000/3000 series	232	0.369	10.5	0.00
Nihon Kohden Celltac Alpha	219	0.333	12.5	0.00
Sysmex XS series	142	0.407	5.3	0.00
Sysmex XT series	142	0.388	6.3	0.00
Sysmex XP Series	130	0.444	5.5	0.00
Mindray BC-6000/6200/6600/6800/6800Plus	111	0.436	4.2	0.00
Sysmex XN-L Series (330/350/450/550)	96	0.410	4.6	0.00
Abbott Cell-Dyn Ruby	88	0.205	25.7	0.01
Siemens/Bayer Advia 120/2120	84	0.396	5.9	0.00
Beckman Coulter DxH 600/800/900 Series	81	0.357	4.1	0.00
Mindray BC 5100/5180/5300/5380/5390	79	0.377	5.9	0.00
ABX Micros/Minos/ABC VET	73	0.327	10.2	0.00
Medonic M series/Swelab	60	0.335	6.9	0.00
Mindray BC 5000/5150/5140/5130/5120	56	0.421	6.7	0.00
Nihon Kohden Celltac E/Es	55	0.314	7.0	0.00
Horiba ABX Pentra 60/80/XLR	45	0.396	5.8	0.00
ABX Pentra 120/Nexus Series	40	0.392	3.8	0.00
Human Humacount Series	35	0.356	10.2	0.01
Erba Lachema Elite series	31	0.335	13.3	0.01
Mindray BC 5600/5800	29	0.381	4.9	0.00

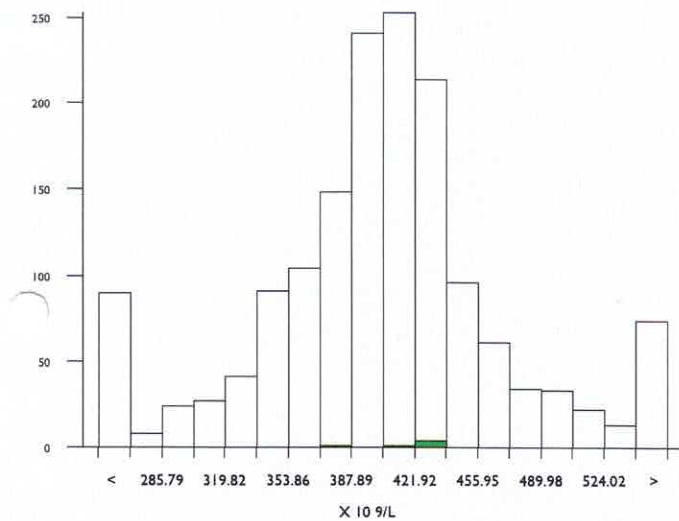


# Platelets (Optical Count), X 10<sup>9</sup>/L

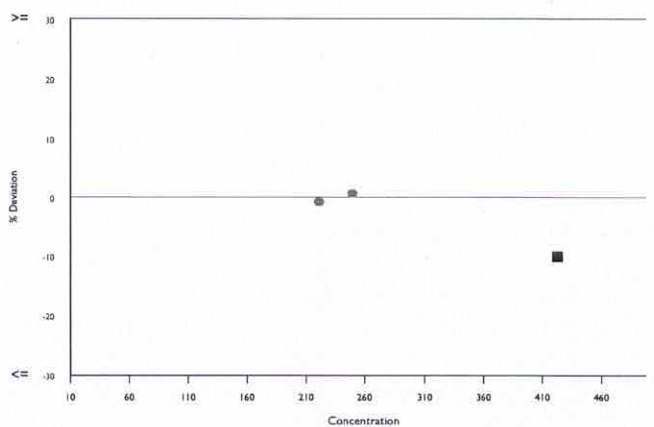
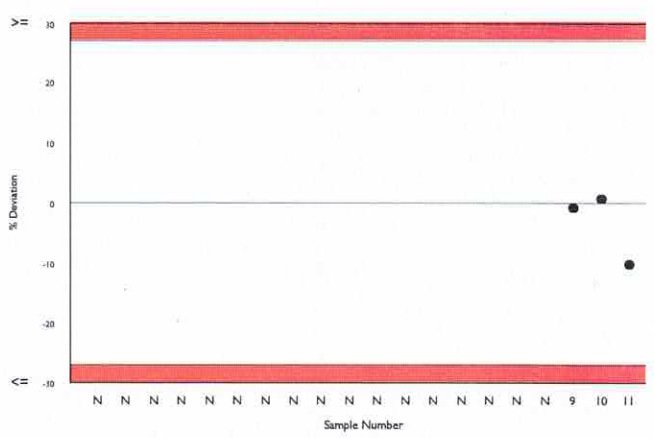
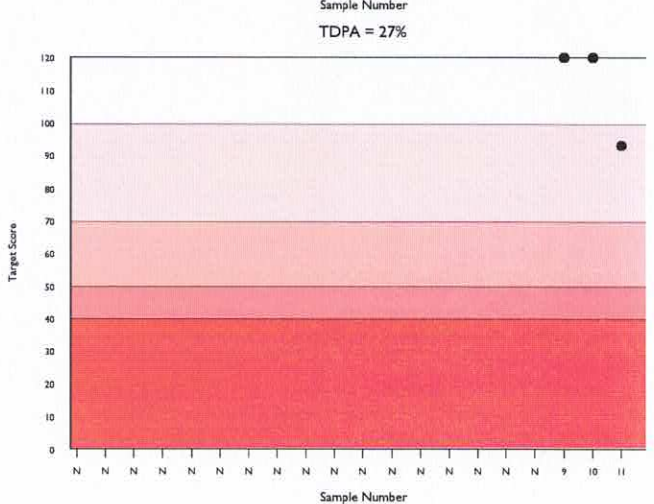
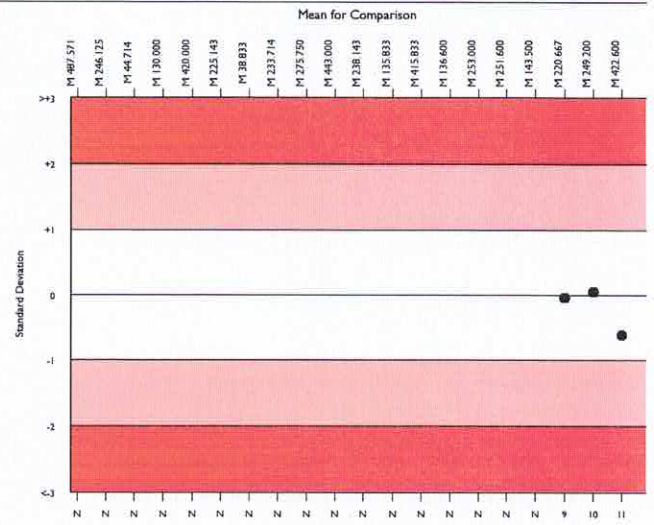
	N	Mean	CV%	U <sub>m</sub>	SDPA	Exc.
All Methods	1400	404.909	11.2	1.52	66.47	174
Beckman Coulter Ac. T 5 series	5	422.600	2.3	5.54	69.37	1

<span style="color: green;">▲</span> Your Result	380.000	SDI	-0.61
		RMSDI	Too Few
<span style="color: green;">■</span> Mean for Comparison	422.600	TS	93
		RMTS	Too Few
		%DEV	-10.1
		RM%DEV	Too Few

Acceptable limits derived from Biological Variation: N/A  
 Acceptable limits of performance for RIQAS: 27.00%



Method	N	Mean	CV%	U <sub>m</sub>
Abbott Cell-Dyn Ruby	394	439.820	11.7	3.25
Manual Methods	284	352.873	15.6	4.09
Siemens/Bayer Advia 120/2120	290	386.469	7.0	1.98
Sysmex XN Series	84	443.208	8.8	5.29
Abbott Cell-Dyn 3200	50	404.836	8.6	6.19
Sysmex XT Series	43	412.462	7.3	5.76
Sysmex XN-L Series (330/350/450/550)	40	420.225	4.7	3.94
Abbott Alinity hq	38	395.632	4.5	3.61
Sysmex XS Series	35	411.614	6.0	5.20
Beckman Coulter DxH 600/800/900 Series	27	420.644	4.2	4.29
Mindray BC-6000/6200/6600/6800/6800Plus	27	410.741	7.2	7.07
Abbott Cell-Dyn Sapphire	17	401.765	3.1	3.81
Sysmex KX21	17	442.824	3.5	4.66
Horiba ABX Pentra 60/80/XLR	8	428.750	4.6	8.70
ABX Micros/Minos/ABC VET	5	369.800	4.6	9.51
Horiba Yumizen H500/ 550	7	439.571	7.4	15.35
Beckman Coulter Ac. T 5 series	5	422.600	2.3	5.54
Beckman Coulter DxH 500 Series	6	449.933	7.4	17.03
ABX Pentra 120/Nexus Series	6	410.667	4.6	9.62
Horiba Yumizen H1500/ 2500	6	438.000	5.7	12.85
Sysmex XE-2100	5	440.000	9.5	23.39



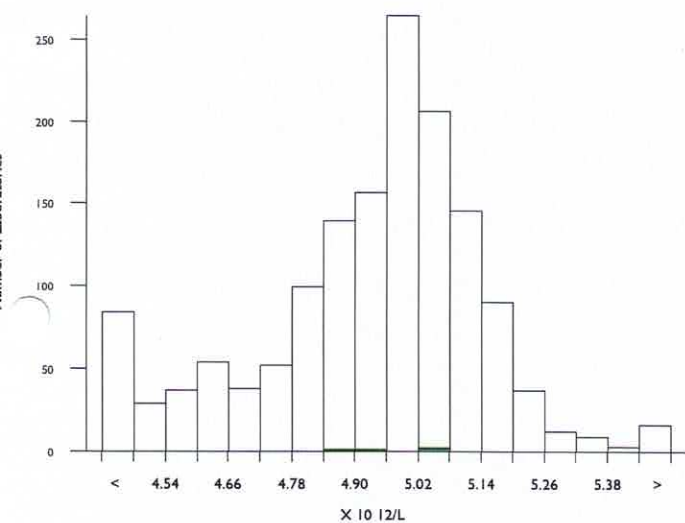
# RBC (Optical Count), X 10<sup>12</sup>/L

	N	Mean	CV%	U <sub>m</sub>	SDPA	Exc.
All Methods	1337	4.964	3.2	0.01	0.17	133
Beckman Coulter Ac. T 5 series	4	4.978	1.9	0.06	0.18a	0

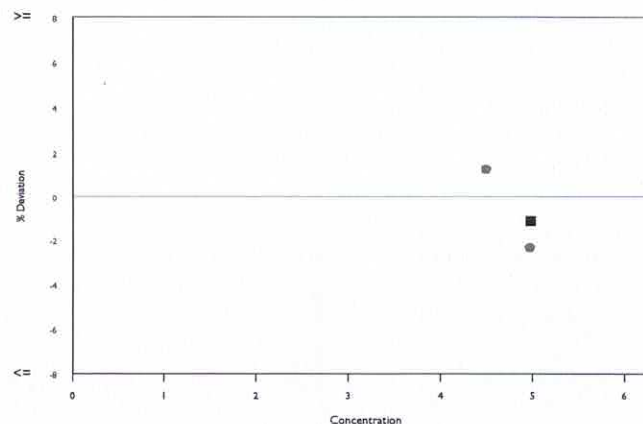
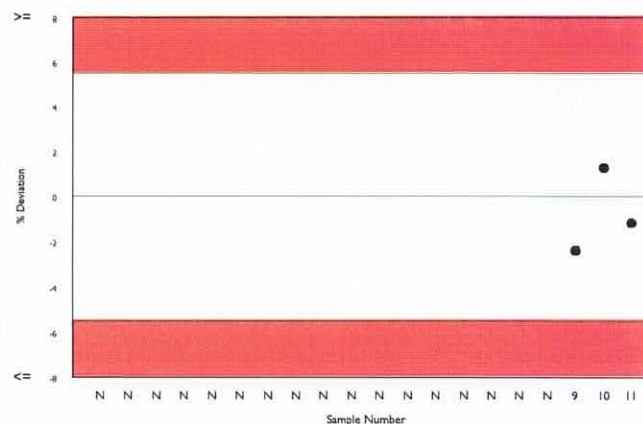
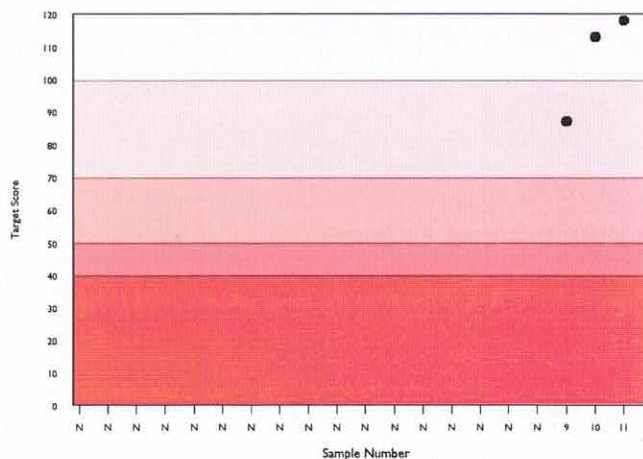
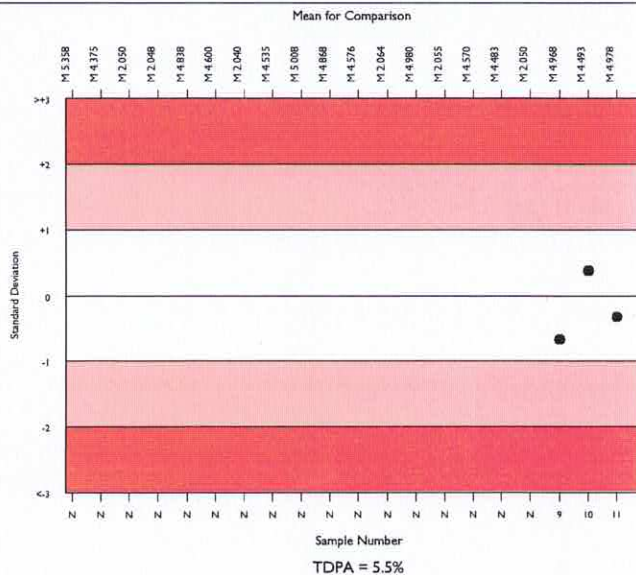
▲ Your Result	4.920	SDI	-0.33
		RMSDI	Too Few
■ Mean for Comparison	4.978	TS	118
		RMTS	Too Few
		%DEV	-1.2
		RM%DEV	Too Few

The mean for comparison is not statistically significant

Acceptable limits derived from Biological Variation	N/A
Acceptable limits of performance for RIQAS	5.50%



Method	N	Mean	CV%	U <sub>m</sub>
Abbott Cell-Dyn Ruby	402	5.044	2.3	0.01
Siemens/Bayer Advia 120/2120	289	4.957	2.1	0.01
Manual Methods	225	4.666	3.7	0.01
Sysmex XN Series	106	5.028	1.6	0.01
Abbott Cell-Dyn 3200	49	4.985	2.7	0.02
Sysmex XT Series	41	4.987	2.4	0.02
Sysmex XS Series	36	5.031	1.1	0.01
Abbott Alinity hq	37	4.984	1.7	0.02
Beckman Coulter DxH 600/800/900 Series	25	4.944	1.0	0.01
Sysmex KX21	21	4.934	1.8	0.02
Mindray BC-6000/6200/6600/6800/6800Plus	17	5.004	1.3	0.02
Abbott Cell-Dyn Sapphire	12	5.015	3.1	0.06
Horiba ABX Pentra 60/80/XLR	11	4.995	1.5	0.03
Horiba Yumizen H500/ 550	8	5.054	2.0	0.05
Beckman Coulter DxH 500 Series	5	5.170	0.7	0.02
ABX Micros/Minos/ABC VET	6	4.940	1.8	0.04
ABX Pentra 120/Nexus Series	6	5.050	1.3	0.03
Sysmex XE-2100	5	4.906	3.0	0.08
Beckman Coulter Ac. T 5 series	4	4.978	1.9	0.06
Beckman Coulter LH700 Series	3	4.970	2.4	0.09
Abbott Cell-Dyn 3700	2	5.150	0.0	0.00

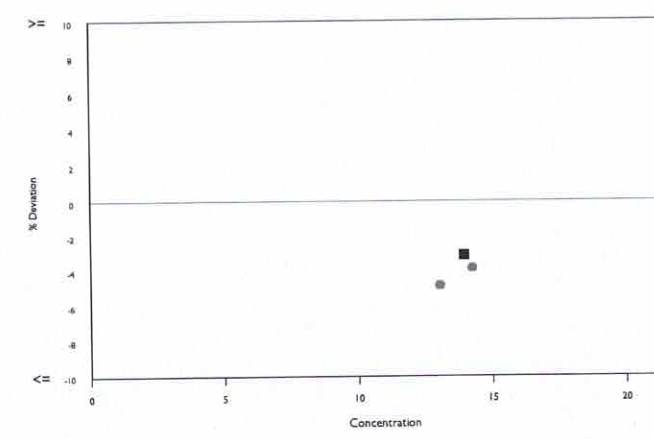
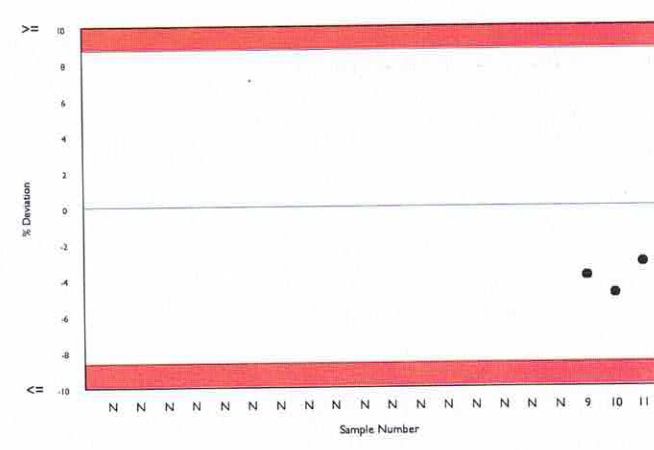
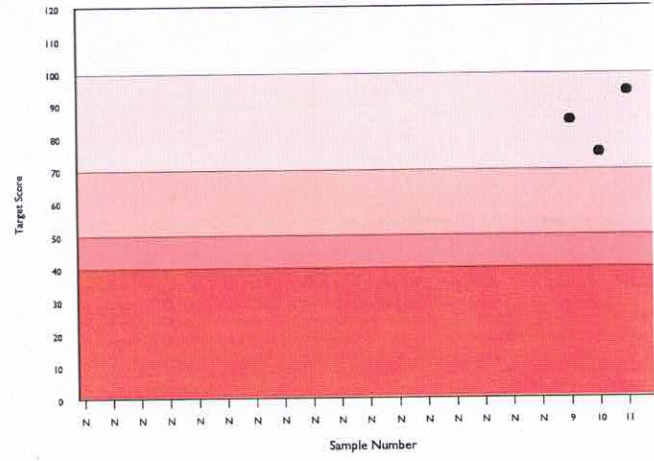
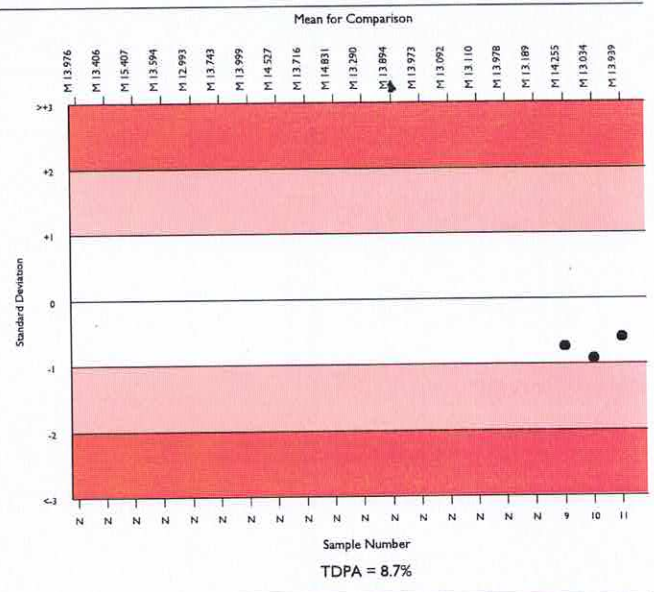
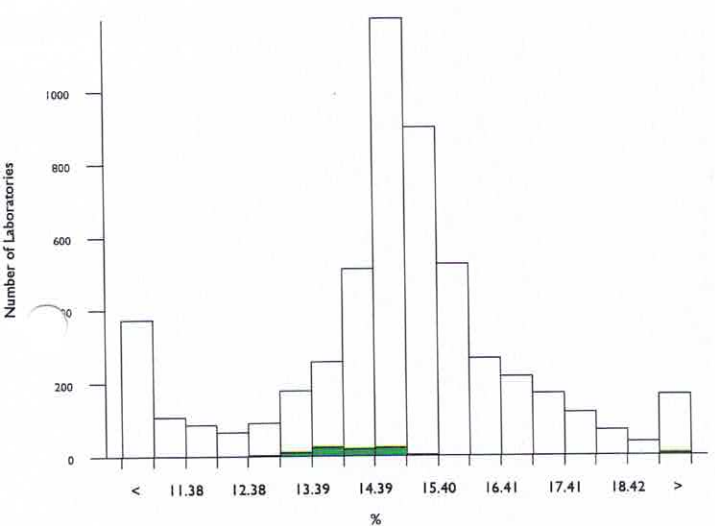


# Red Cell Dist. Width CV, %

	N	Mean	CV%	U <sub>m</sub>	SDPA	Exc.
All Methods	4717	14.902	9.0	0.02	0.79	602
Beckman Coulter Ac. T 5 series	78	13.939	4.1	0.08	0.74	8

▲ Your Result	13.500	SDI	-0.60
		RMSDI	Too Few
■ Mean for Comparison	13.939	TS	94
		RMTS	Too Few
		%DEV	-3.2
		RM%DEV	Too Few

Acceptable limits derived from Biological Variation	N/A
Acceptable limits of performance for RIQAS	8.70%



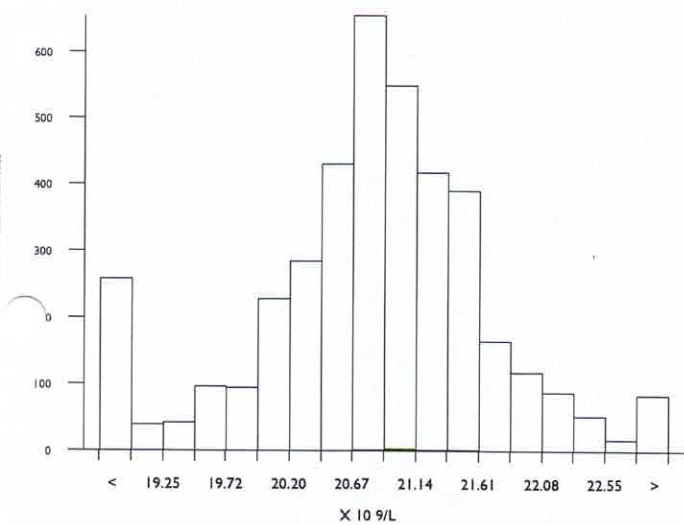
Method	N	Mean	CV%	U <sub>m</sub>
Sysmex XN Series	1025	14.888	4.1	0.02
Abbott Cell-Dyn Ruby	302	11.378	13.1	0.11
Sysmex XS series	247	15.751	4.6	0.06
Sysmex XN-L Series (330/350/450/550)	249	15.492	9.2	0.11
Beckman Coulter DxH 600/800/900 Series	237	15.114	1.8	0.02
Nihon Kohden Celltac Alpha	227	14.542	4.9	0.06
Mindray BC 1000/2000/3000 series	219	14.374	3.6	0.04
Siemens/Bayer Advia 120/2120	220	16.017	4.9	0.07
Sysmex XT series	206	15.665	4.7	0.06
Sysmex XP Series	192	11.310	12.0	0.12
Mindray BC-6000/6200/6600/6800/6800Plus	146	15.178	2.5	0.04
Mindray BC 5100/5180/5300/5380/5390	102	14.725	6.1	0.11
Horiba ABX Pentra 60/80/XLR	106	14.027	5.5	0.09
Sysmex KX 21	78	11.131	8.0	0.13
Beckman Coulter Ac. T 5 series	78	13.939	4.1	0.08
ABX Micros/Minos/ABC VET	74	13.053	5.8	0.11
Beckman Coulter LH700 Series	63	15.163	1.5	0.04
Mindray BC 5000/5150/5140/5130/5120	59	16.643	2.5	0.07
Nihon Kohden Celltac E/Es	63	16.523	4.7	0.12
Medonic M series/Swelab	58	12.662	9.8	0.20
ABX Pentra 120/Nexus Series	53	16.040	4.6	0.13

# WBC (Optical Count), X 10<sup>9</sup>/L

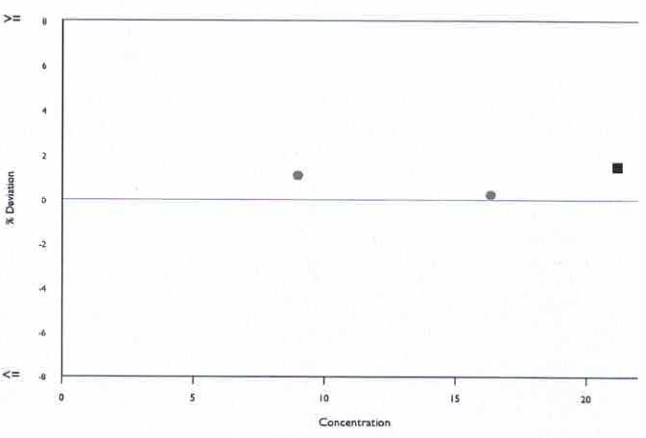
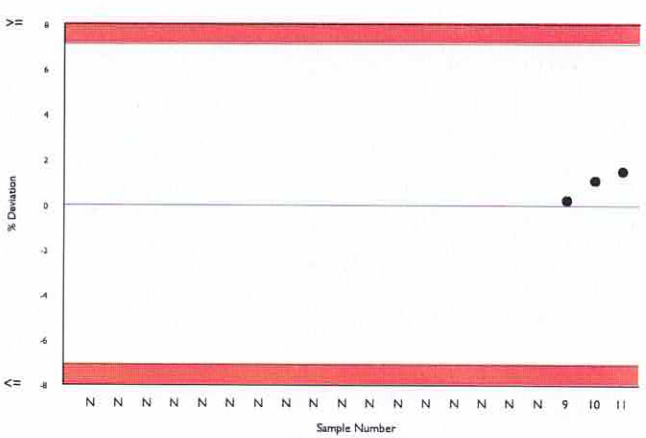
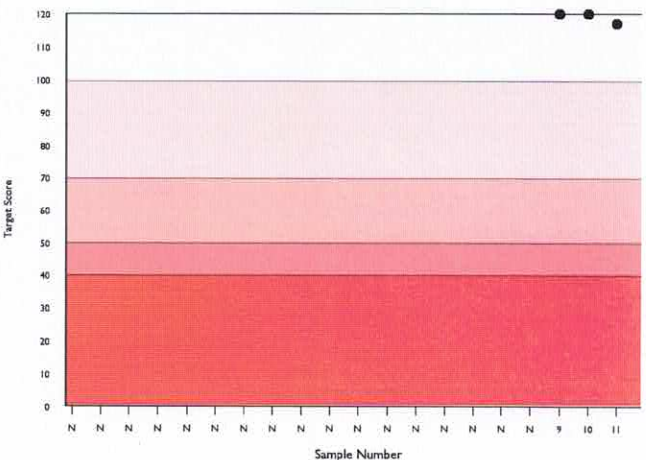
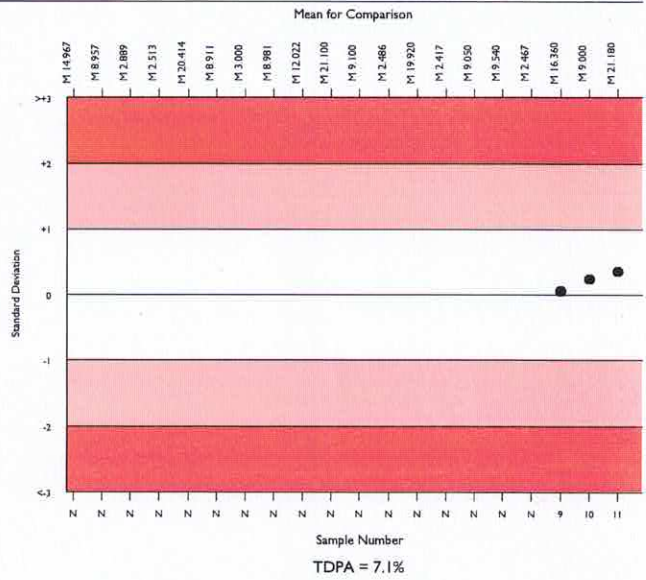
	N	Mean	CV%	U <sub>m</sub>	SDPA	Exc.
All Methods	3615	20.907	3.0	0.01	0.90	383
Beckman Coulter Ac. T 5 series	5	21.180	1.1	0.13	0.91	0

▲ Your Result	21.500	SDI	0.35
		RMSDI	Too Few
■ Mean for Comparison	21.180	TS	117
		RMTS	Too Few
		%DEV	1.5
		RM%DEV	Too Few

Acceptable limits derived from Biological Variation: N/A  
 Acceptable limits of performance for RIQAS: 7.10%



Method	N	Mean	CV%	U <sub>m</sub>
Sysmex XN Series	1183	20.852	1.7	0.01
Abbott Cell-Dyn Ruby	402	21.076	2.6	0.03
Manual methods	313	20.032	7.2	0.10
Sysmex XS Series	313	21.314	2.6	0.04
Siemens/Bayer Advia 120/2120	283	20.266	3.6	0.05
Sysmex XT Series	263	21.267	2.7	0.04
Sysmex XN-L Series (330/350/450/550)	242	21.241	1.9	0.03
Mindray BC-6000/6200/6600/6800/6800Plus	175	20.626	2.2	0.04
Mindray BC 5000/5150/5140/5130/5120	65	20.765	2.1	0.07
Abbott Cell-Dyn 3200	45	20.968	3.3	0.13
Mindray BC 5600/5800	51	21.513	3.3	0.12
Abbott Alinity hq	38	20.858	3.0	0.13
Beckman Coulter DxH 600/800/900 Series	37	20.792	1.5	0.07
Sysmex XE-2100	28	20.375	2.9	0.14
ABX Pentra 120/Nexus Series	26	21.763	2.7	0.14
Sysmex KX21	23	20.452	3.5	0.19
Abbott Cell-Dyn Sapphire	16	21.313	3.4	0.23
Mindray BC 5200/5500	11	21.355	3.9	0.32
Horiba ABX Pentra 60/80/XLR	11	20.735	4.1	0.32
ABX Micros/Minos/ABC VET	10	20.430	2.3	0.19
Horiba Yumizen H500/ 550	11	19.580	3.8	0.28

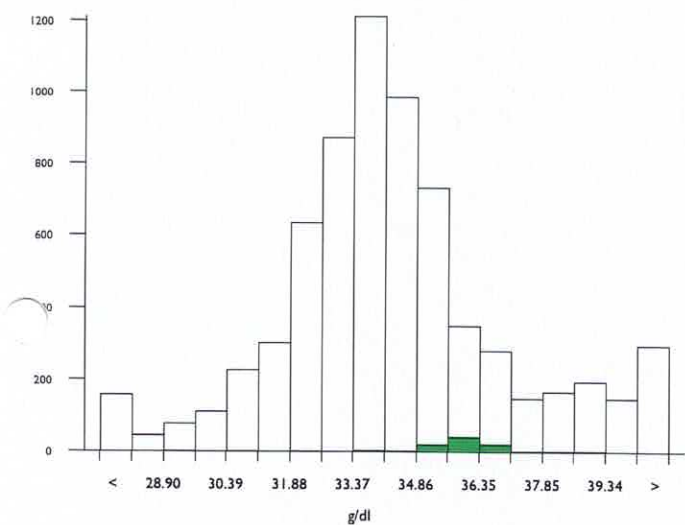


# MCHC, g/dl

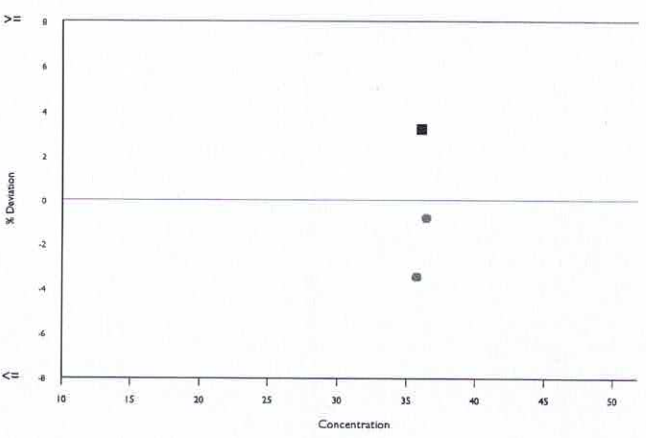
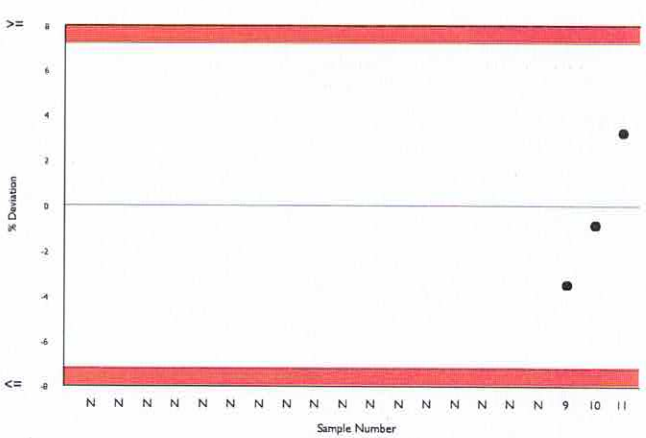
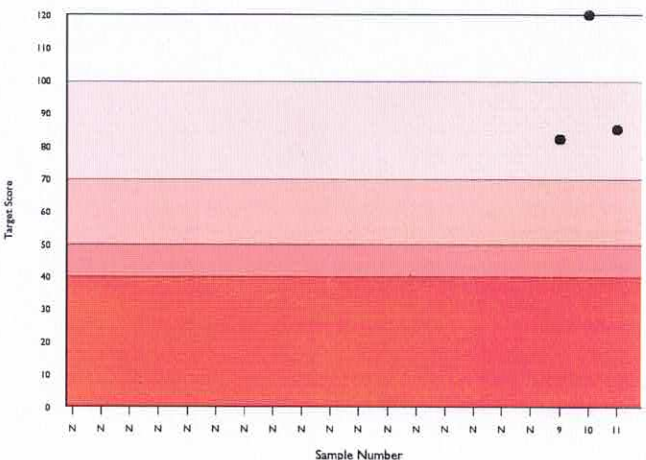
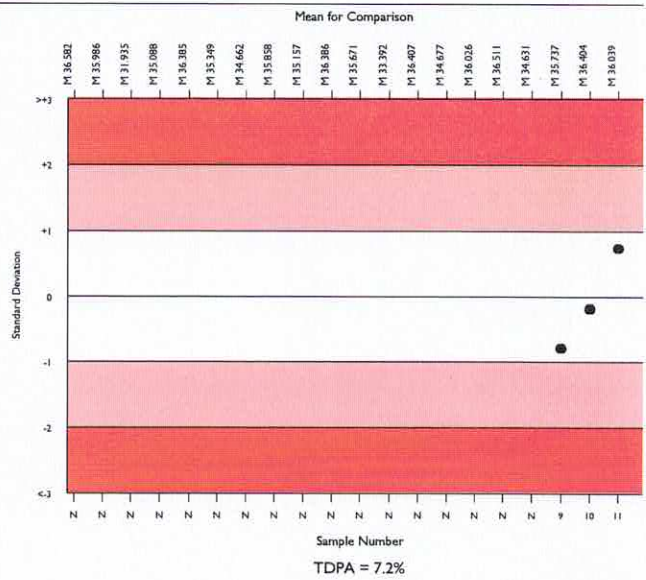
	N	Mean	CV%	U <sub>m</sub>	SDPA	Exc.
All Methods	6273	34.122	5.8	0.03	1.49	656
Beckman Coulter Ac. T 5 series	83	36.039	1.6	0.08	1.58	10

<span style="color: green;">▲</span> Your Result	37.200	SDI	0.74
		RMSDI	Too Few
<span style="color: green;">■</span> Mean for Comparison	36.039	TS	85
		RMTS	Too Few
		%DEV	3.2
		RM%DEV	Too Few

Acceptable limits derived from Biological Variation: N/A  
 Acceptable limits of performance for RIQAS: 7.20%



Method	N	Mean	CV%	U <sub>m</sub>
Sysmex XN Series	1263	34.035	2.3	0.03
Abbott Cell-Dyn Ruby	393	39.461	2.6	0.07
Sysmex XN-L Series (330/350/450/550)	336	33.933	2.6	0.06
Sysmex XS series	328	34.012	2.9	0.07
Beckman Coulter DxH 600/800/900 Series	293	32.819	1.8	0.04
Mindray BC 1000/2000/3000 series	280	33.227	3.7	0.09
Siemens/Bayer Advia 120/2120	288	37.968	2.8	0.08
Nihon Kohden Celltac Alpha	258	33.760	3.1	0.08
Sysmex XT series	264	33.826	3.2	0.08
Sysmex XP Series	261	35.844	3.8	0.11
Mindray BC-6000/6200/6600/6800/6800Plus	178	30.941	2.4	0.07
ABX Micros/Minos/ABC VET	161	34.163	3.5	0.12
Sysmex KX 21	152	35.657	3.5	0.13
Horiba ABX Pentra 60/80/XLR	147	35.823	2.5	0.09
Mindray BC 5100/5180/5300/5380/5390	130	31.732	3.4	0.12
Nihon Kohden Celltac E/Es	83	32.917	3.4	0.15
Beckman Coulter Ac. T 5 series	83	36.039	1.6	0.08
Medonic M series/Swelab	76	35.402	3.1	0.16
Beckman Coulter LH700 Series	75	33.172	2.1	0.10
Mindray BC 5000/5150/5140/5130/5120	69	32.261	2.8	0.14
ABX Pentra 120/Nexus Series	70	35.800	2.0	0.11



Platelet	Mean for Comparison	Your Result	SDI	RMSDI	%DEV	RM%DEV	TS	RMTS	Performance
Hemoglobin	15.419	15.500	0.22	Too Few	0.5	Too Few	120	Too Few	
Hematocrit (HCT)	42.818	41.700	-0.71	Too Few	-2.6	Too Few	94	Too Few	
MCV	30.770	31.500	0.66	Too Few	2.4	Too Few	98	Too Few	
MCH	36.039	37.200	0.74	Too Few	3.2	Too Few	85	Too Few	
MCHC	85.305	85.000	-0.10	Too Few	-0.4	Too Few	120	Too Few	
Platelet Volume	9.461	9.500	0.06	Too Few	0.4	Too Few	120	Too Few	
Hematocrit	0.384	No Result		Too Few		Too Few		Too Few	
Platelets (Optical Count)	422.600	380.000	-0.61	Too Few	-10.1	Too Few	93	Too Few	
Platelets (Optical Count)	4.978	4.920	-0.33	Too Few	-1.2	Too Few	118	Too Few	
Cell Dist. Width CV	13.939	13.500	-0.60	Too Few	-3.2	Too Few	94	Too Few	
Cell Dist. Width CV (Optical Count)	21.180	21.500	0.35	Too Few	1.5	Too Few	117	Too Few	

ORMSDI N/A

ORM%DEV N/A

ORMTS N/A

Sample ID cycle13 sample11  
 Run Date/Time 05/11/2020 18:34:56 Collect Date/Time  
 Cass. Pos. Flagging Set Proteus Standard Panel CBC/DIFF Rerun No  
 Location Physician Operator Supervisor  
 Patient ID  
 Last Name Date of Birth Age Gender Unknown  
 First Name  
 Patient Comment

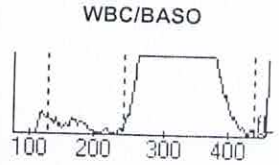
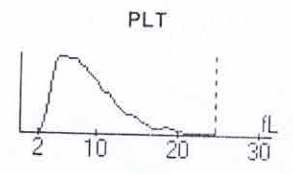
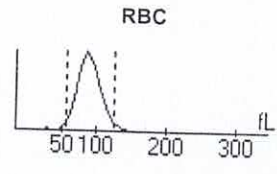
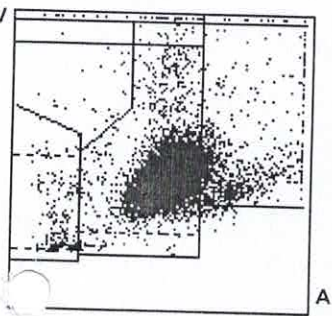
			Range
WBC	21.5HH	10 <sup>3</sup> /μL	4.0 / 11.0
RBC	4.92	10 <sup>6</sup> /μL	4.00 / 6.20
HGB	15.5	g/dL	11.0 / 18.8
HCT	41.7	%	35.0 / 55.0
MCV	85	fL	80 / 100
MCH	31.5	pg	26.0 / 34.0
MCHC	37.2HH	g/dL	31.0 / 35.0
K	13.5	%	10.0 / 20.0
PLT	380	10 <sup>3</sup> /μL	150 / 400
MPV	9.5	fL	6.0 / 10.0

			Range
NE	....	%	50.0 / 80.0
LY	1.9RLL	%	25.0 / 50.0
MO	0.2RLL	%	2.0 / 10.0
EO	....	%	0.0 / 5.0
BA	....	%	0.0 / 2.0
NE#	....	10 <sup>3</sup> /μL	2.00 / 8.00
LY#	0.40RLL	10 <sup>3</sup> /μL	1.00 / 5.00
MO#	0.04RLL	10 <sup>3</sup> /μL	0.10 / 1.00
EO#	....	10 <sup>3</sup> /μL	0.00 / 0.40
BA#	....	10 <sup>3</sup> /μL	0.00 / 0.20

Flags and Messages

DiffPlot and Histogram Flags  
 \*WBC, SL, NE, SL1  
 Analytical Messages  
 DB  
 BASO+  
 Interpretive Messages  
 Leukocytosis  
 Lymphopenia  
 NRBCs  
 Cold Agglutinin

Result Comment



Microscopic Examination

Neutrophils	_____	Metamyelocytes	_____	Anisocytosis	_____	Retics	_____
Bands	_____	Myelocytes	_____	Hypochromia	_____	Sed. Rate	_____
Lymphocytes	_____	Promyelocytes	_____	Polychromasia	_____		
Monocyte	_____	Blast	_____	Poikilocytosis	_____		
Eosinophils	_____	Atyp. Lymph	_____	Microcytosis	_____		
Basophils	_____	NRBCs	_____	Macrocytosis	_____		

Comments \_\_\_\_\_

Requested by \_\_\_\_\_  
 Reviewed by \_\_\_\_\_

Raw Data	WBC1 15066	WBC2 14602	LY# 202	SL 72	FNL 23	WBC 14938
	RBC1 26286	RBC2 26483	MO# 22	ATL 6	FMN 4	RA# 11605
	HCT1 1981765	HCT2 1974760	NE# 9501	UM 1	FNE 254	DIFF# 10821
	PLT1 20453	PLT2 20324	EO# 1096	LN 63	UN 18	CO% 95.0
	HGBB 3835	HGBM 1835	DB 124	C127 59	IMM 78	

Out of Action Range **XXX** Out of Patient Range **XX.X**

05/11/20

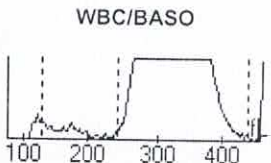
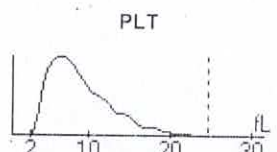
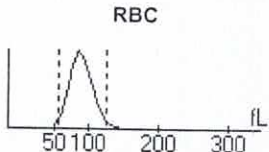
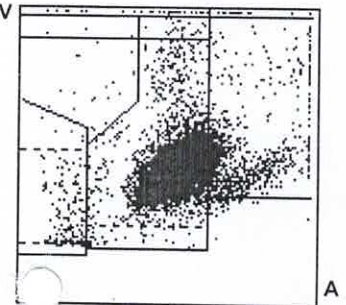
147

RAW DATA REPORT FOR INVESTIGATIONAL USE ONLY

Sample ID cycle13saml11 Run Date/Time 05/11/2020 18:38:08 Collect Date/Time  
 Cass. Pos. Flagging Set Proteus Standard Panel CBC/DIFF Rerun No  
 Location Physician Operator Supervisor  
 Sample Comment  
 Patient ID  
 Last Name Date of Birth Age Gender Unknown  
 First Name  
 Patient Comment

Range			Range			Flags and Messages	
WBC	22.0FH	10 <sup>3</sup> /μL	4.0	11.0	NE	DiffPlot and Histogram Flags *WBC, SL, NE, SL1 Analytical Messages DB BASO+ Interpretive Messages Leukocytosis Lymphopenia NRBCs Cold Agglutinin	
RBC	4.97	10 <sup>6</sup> /μL	4.00	6.20	LY		1.6RLL
HGB	15.5	g/dL	11.0	18.8	MO		0.2RLL
HCT	41.9	%	35.0	55.0	EO		
MCV	84	fL	80	100	BA		
MCH	31.1	pg	26.0	34.0	NE#		
MCHC	36.9HH	g/dL	31.0	35.0	LY#		0.36RLL
K	13.2	%	10.0	20.0	MO#		0.04RL
PLT	384	10 <sup>3</sup> /μL	150	400	EO#		
MPV	9.3	fL	6.0	10.0	BA#		

Result Comment



Microscopic Examination

Neutrophils	_____	Metamyelocytes	_____	Anisocytosis	_____	Retics	_____
Bands	_____	Myelocytes	_____	Hypochromia	_____	Sed. Rate	_____
Lymphocytes	_____	Promyelocytes	_____	Polychromasia	_____		
Monocyte	_____	Blast	_____	Poikilocytosis	_____		
Eosinophils	_____	Atyp. Lymph	_____	Microcytosis	_____		
Basophils	_____	NRBCs	_____	Macrocytosis	_____		

Comments \_\_\_\_\_ Requested by \_\_\_\_\_  
 Reviewed by \_\_\_\_\_

Raw Data	WBC1 15186	WBC2 15049	LY# 177	SL 69	FNL 23	WBC 14909
	RBC1 26749	RBC2 26442	MO# 19	ATL 7	FMN 2	RA# 11611
	HCT1 2003401	HCT2 1965662	NE# 9521	UM 1	FNE 239	DIFF# 10842
	PLT1 20683	PLT2 20454	EO# 1125	LN 63	UN 22	CO% 95.2
	HGBB 3832	HGBM 1838	DB 123	C127 60	IMM 83	

Out of Action Range **XXX** Out of Patient Range **XX.X**

RAW DATA REPORT FOR INVESTIGATIONAL USE ONLY